

TADANO AERIAL PLATFORM

MODEL : AT-270TG

(CARRIER : FC9JJLA)

GENERAL DATA

<u>MAXIMUM WORKING HEIGHT</u>	29.0 m
<u>MAXIMUM BASKET BOTTOM HEIGHT</u>	27.0 m
<u>MAXIMUM BASKET LOADING CAPACITY</u>	200 kg or two(2) persons
<u>BOOM</u>	4-section, 8.0 m - 25.52 m
<u>DIMENSIONS</u>	
Overall length	approx. 8,600 mm
Overall width	approx. 2,175 mm
Overall height	approx. 3,750 mm
<u>MASS</u>	
Vehicle mass	approx. 8,370 kg
Gross vehicle mass	approx. 8,565 kg

Specifications are subject to change without notice.

AERIAL PLATFORM SPECIFICATIONS

<u>MODEL</u>	AT-270TG
<u>MAX. BASKET BOTTOM HEIGHT</u>	27.0 m
<u>BASKET EQUIPMENT</u>	<p>Basket</p> <p>Pipe made</p> <p>Inside dimensions (Length x width x depth) 0.7 m x 1.2 m x 0.9 m</p> <p>Capacity 200 kg or two(2) persons</p> <p>Automatic leveling system</p> <p>By hydraulic cylinders.</p> <p>Basket swing system</p> <p>Electric motor driven through reduction gear</p> <p>Swing angle 200° (Left 97° Right 103°)</p>
<u>BOOM</u>	<p>Four-section full power synchronized telescoping boom of box construction. The synchronization system consists of a double-acting hydraulic cylinder, extension cables and retraction cables. Hydraulic cylinder fitted with a holding valve and a pilot check valve.</p> <p>Fully retracted length 8.0 m</p> <p>Fully extended length 25.52 m</p> <p>Extension speed 17.52 m in 60 s</p>
<u>ELEVATION</u>	<p>By a double-acting hydraulic cylinder, fitted with a holding valve.</p> <p>Elevation speed -12° to 80° in 50 s</p>
<u>ROTATION</u>	<p>Hydraulic motor driven through worm reduction gear.</p> <p>360° continuous in either direction on ball bearing rotating ring.</p> <p>Rotating speed 1.0 min⁻¹ {rpm}</p>

HYDRAULIC SYSTEM

Pumps	Gear pump
Control valves	Multiple hydraulic-control valves actuated by switch with integral relief valves, on rotating frame. And electric remote control from basket.
Hydraulic oil tank capacity	Approx. 110 L
Filter	Return line filter

OUTRIGGERS

Four hydraulically operated outriggers. Each outrigger controlled simultaneously or independently from rear side of carrier. Equipped with sight level gauge. Floats mounted integrally with the jacks and retract to within vehicle width. All cylinders fitted with pilot check valves.

Fully extended width 4.4 m

CONTROLS AND MONITORS

In basket

Joy-stick levers with mode selector

- vertical/horizontal mode for vertical up down, horizontal movement parallel to ground and basket swing.

- conventional mode for superstructure rotation, boom telescoping, boom elevation and basket swing.

Switches for engine start-stop, automatic boom stowing, acceleration change-over (2 speed with auto-acceleration), mode selector (vertical/horizontal, conventional movement selector), emergency pump start, emergency stop-release.

Monitor lamps for moment limit, emergency stop, selection of basket vertical/horizontal movement.

On rotating frame

Switches for telescoping of boom, elevation, rotation, acceleration change-over (2 speed with auto-acceleration), automatic boom stowing, emergency pump start, emergency stop-release, emergency operation.

Cocks for basket leveling control.

Outriggers control

Levers for extension-retraction and outrigger selection.

Switches for acceleration (2 speed with auto-acceleration), and engine start-stop.

SAFETY DEVICES

Automatic moment limiter (AMC)
Boom profile monitor system (Prevent hitting vehicle by boom and by basket)
Automatic speed control system on boom elevation and rotation.
Automatic speed reduction and soft stop function on boom elevation, rotation and telescoping.
Automatic acceleration
Boom vertical/horizontal movement device
Boom and basket automatic stowing
Emergency pump
Emergency stop system
Parking brake warning
PTO connect warning (when drive)
Jack interlock
Boom interlock
Outrigger indicator
Shift lever interlock
Hydraulic cylinder lock valves
Hydraulic safety valves
Level gauge
Guard for operation levers
Foot switch (on basket)

ACCESSORIES

Hour meter
Rubber blocks (for outriggers)
Chocks

OPTIONAL EQUIPMENT

Work light (on basket)
Safety belt
Elevation cylinder boots
Wood block (for outrigger)
Yellow flickers
Grease pump
Tools

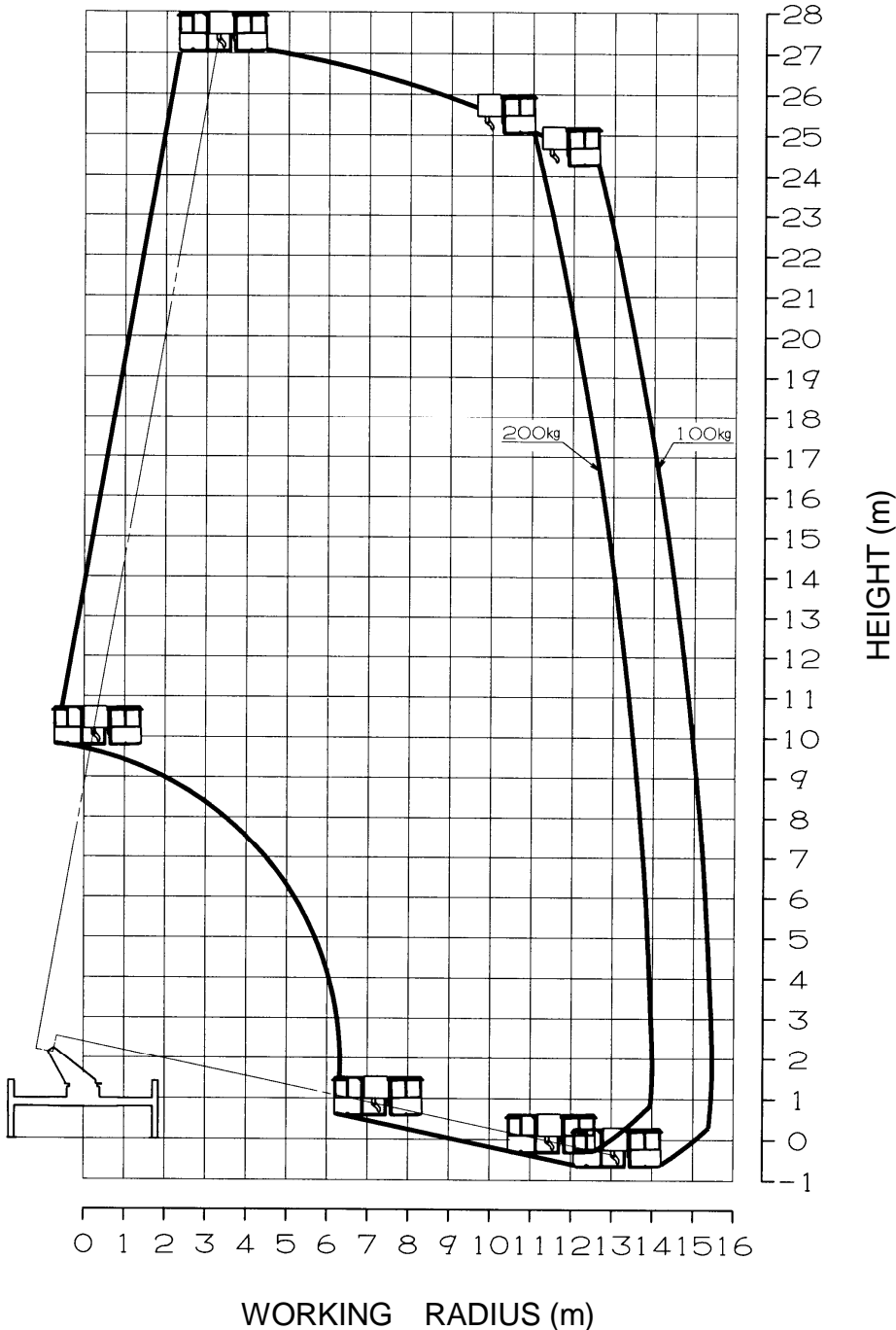
CARRIER SPECIFICATIONS

<u>MANUFACTURER</u>	HINO MOTORS, LTD.
<u>MODEL</u>	FC9JJLA Right-hand steering, 4 x 2
<u>ENGINE</u>	Model J05E-TC Type 4 stroke-cycle, water cooled, direct injection diesel engine Piston displacement... 5,123cm ³ Max. output (ISO NET)...129 kW {175 PS} at 2,500 min ⁻¹ {rpm} Max. torque (ISO NET)...500 N-m {51 kgf-m} at 1,500 min ⁻¹ {rpm}
<u>CLUTCH</u>	Hydraulic control, coil spring, single dry plate with power cylinder
<u>TRANSMISSION</u>	6-speed, directdrive, synchromesh 2nd-6th
<u>AXLES</u>	Front..... Reversed Elliot, "I" section beam Rear..... Full floating type
<u>STEERING</u>	Recirculating ball with hydraulic booster
<u>SUSPENSION</u>	Front..... Multi leaf springs Rear..... Multi leaf springs
<u>BRAKE SYSTEM</u>	Service..... Air over hydraulic, dual circuit Parking..... Internal expanding type on propeller shaft at rear of transmission
<u>ELECTRIC SYSTEM</u>	24 Volt, regulated control Battery 12V x 2
<u>FUEL TANK CAPACITY</u>	100 liters
<u>CAB</u>	Tilt type with torsion bars, all steel welded construction, 3-man type
<u>TIRES</u>	Front..... 8.25R16-14PR, Single x 2 Rear..... 8.25R16-14PR, Dual x 2 Spare..... 8.25R16-14PR, x 1

WORKING RANGE

Outriggers fully extended
Working area : 360°

Basket loading capacity :
200 kg or 2 persons



NOTES: Working ranges shown are for a case where the aerial platform is set on firm, level ground, and do not include boom deflection.

EXTERNAL VIEWS

