



TADANO AERIAL PLATFORM

MODEL: AT-130TG

(CARRIER : HINO XZU650R)

GENERAL DATA

MAXIMUM WORKING HEIGHT		15.1 m
MAXIMUM BASKET BOTTOM HEIGHT		13.1 m
MAXIMUM BASKETLOADING CAPACITY		200 kg or two(2) persons
BOOM		3-section, 5.06m - 11.53m
DIMENSIONS	Overall Length	Approx. 5,400 mm
	Overall Width	Approx. 1,880 mm
	Overall Height	Approx. 3,300 mm
MASS	Overall Mass	Approx. 6,600 Kg

Specifications are subject to change without notice.

AERIAL PLATFORM SPECIFICATIONS

MODEL	AT-130TG	
MAX. BUCKET BOTTOM HEIGHT	13.0 m	
BASKET EQUIPMENT	Basket	
	Pipe made	
	Inside dimensions (Length x width x depth)	
	0.7 m x 1.2m x 0.9 m	
	Capacity 200 kg or two(2) persons	
	Automatic leveling system	
	By hydraulic cylinders.	
	Swing system	
	Electric motor driven through worm reduction gear	
	Swing angle Left 97° / Right 103°	
BOOM	Three-section full power synchronized telescoping boom of box construction. The synchronization system consists of a double-acting hydraulic cylinder, an extension cable and a retraction cable. Hydraulic cylinder fitted with a holding valve and a pilot check valve.	
	Fully retracted length 5.06 m	
	Fully extended length 11.53 m	
	Extension speed 6.47 m in 30 s	
ELEVATION	By a double-acting hydraulic cylinder, fitted with a holding valve.	
	Elevation speed -16° to 80° in 30 s	
ROTATION	Hydraulic motor driven through worm reduction gear.	
	360 o continuous in either direction on ball bearing rotating ring.	
	Rotating speed 1.2 min-1{rpm}	
HYDRAULIC SYSTEM	Pumps	Gear pump.
	Control valves	Multiple remote-control valves actuated by electric remote control from rotating frame and bucket.
	Hydraulic tank capacity	Approx.63 L
		Filter Return line filter
OUTRIGGERS	Four hydraulically operated outriggers. Each outrigger controlled simultaneously or independently from rear side of carrier. Equipped with sight level gauge. Floats mounted integrally with the jacks and retract to within vehicle width. All cylinders fitted with pilot check valves.	
	Fully Extended outrigger width 3.3 m	
CONTROLS AND MONITORS	In basket	
	Joy-stick levers with mode selector	
	- vertical/horizontal mode for vertical up down, horizontal movement parallel to ground and bucket swing.	
	- conventional mode for superstructure rotation, boom telescoping, boom elevation and bucket swing.	
	Switches for automatic stowing, emergency stop, mode	

selector (vertical/horizontal, conventional movement selector), engine start/stop and acceleration changeover(2 speed with auto-acceleration)/emergency pump.
Monitors for working area limit, emergency stop, vertical/horizontal movement selector lamp.

On rotating frame

Switches for boom rotation, boom telescoping, boom elevation, automatic stowing, acceleration changeover(2 speed with auto-acceleration), emergency pump, emergency stop and emergency stop release.
Cocks for basket leveling control.

Outriggers control

Lever for extension-retraction and outrigger selection.
Switches for acceleration (2 speed with auto-acceleration), and engine start-stop.

SAFETY DEVICES

Automatic moment limiter (AMC)
Boom profile monitor system (Prevent hitting vehicle by boom and by basket)
Automatic speed control system on boom elevation and rotation.
Automatic speed reduction and soft stop function on boom elevation, rotation and telescoping.
Automatic acceleration
Boom vertical/horizontal movement device
Boom and basket automatic stowing
Emergency pump
Emergency stop system
Parking brake warning
PTO connect warning (when drive)
Jack interlock
Boom interlock
Outrigger indicator
Shift lever interlock
Hydraulic cylinder lock valves
Hydraulic safety valves
Level gauge
Guard for operation levers
Foot switch (on basket)

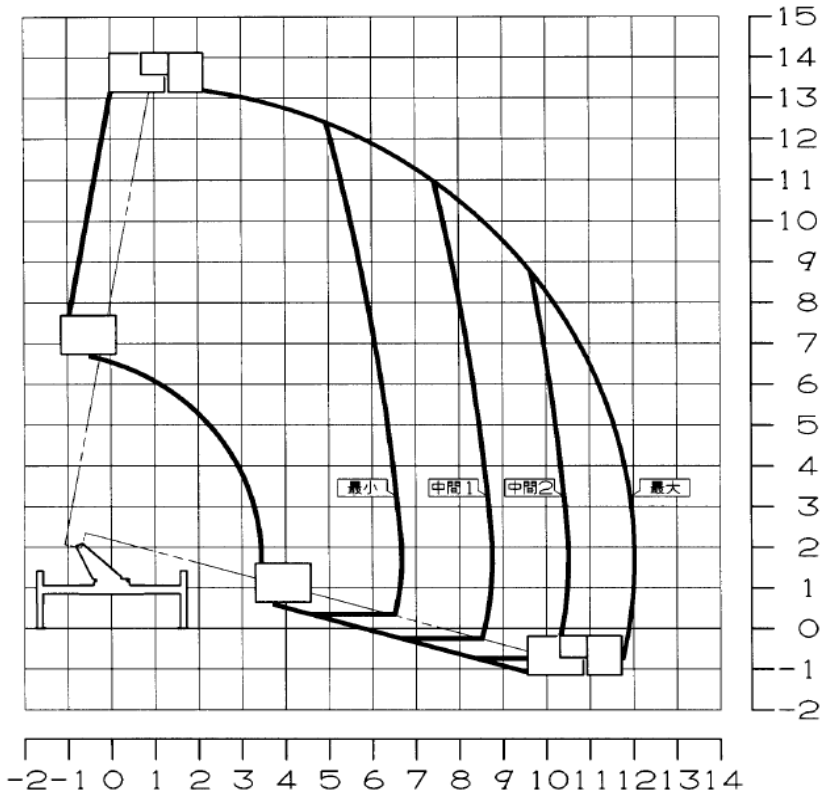
ACCESSORIES

Hour meter
Rubber blocks (for outriggers)

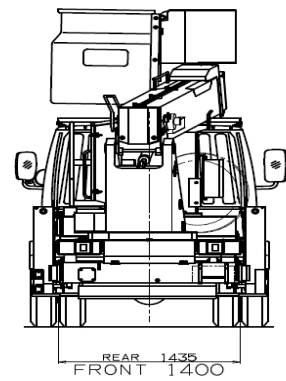
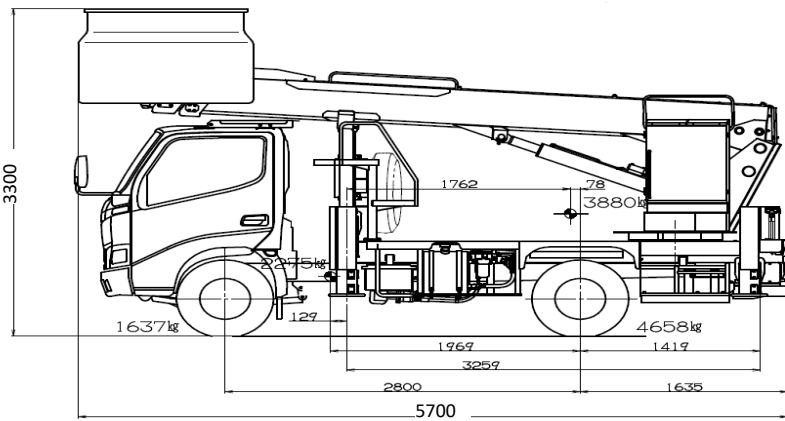
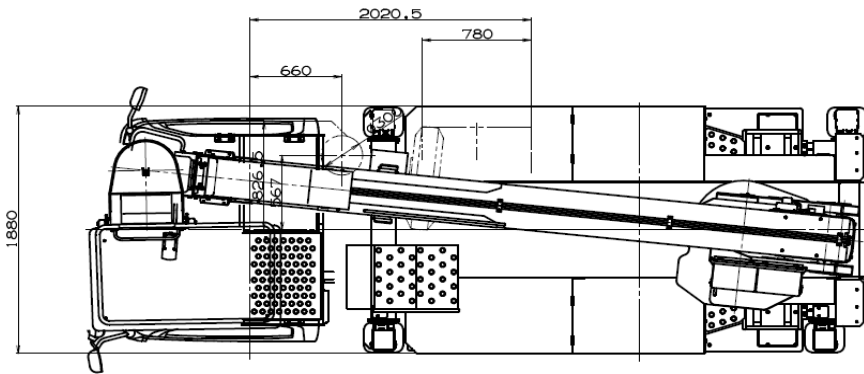
OPTIONAL EQUIPMENT

Chocks
Work light (on basket)
Safety belt
Grease pump
Tools

WORKING RANGE



Basket loading capacity :
 200 kg or 2 persons
 Working Height 15.0 m
 Platform Height 13.0 m



※ This drawing is based on a Japanese model, so there are some differences from Thai model.